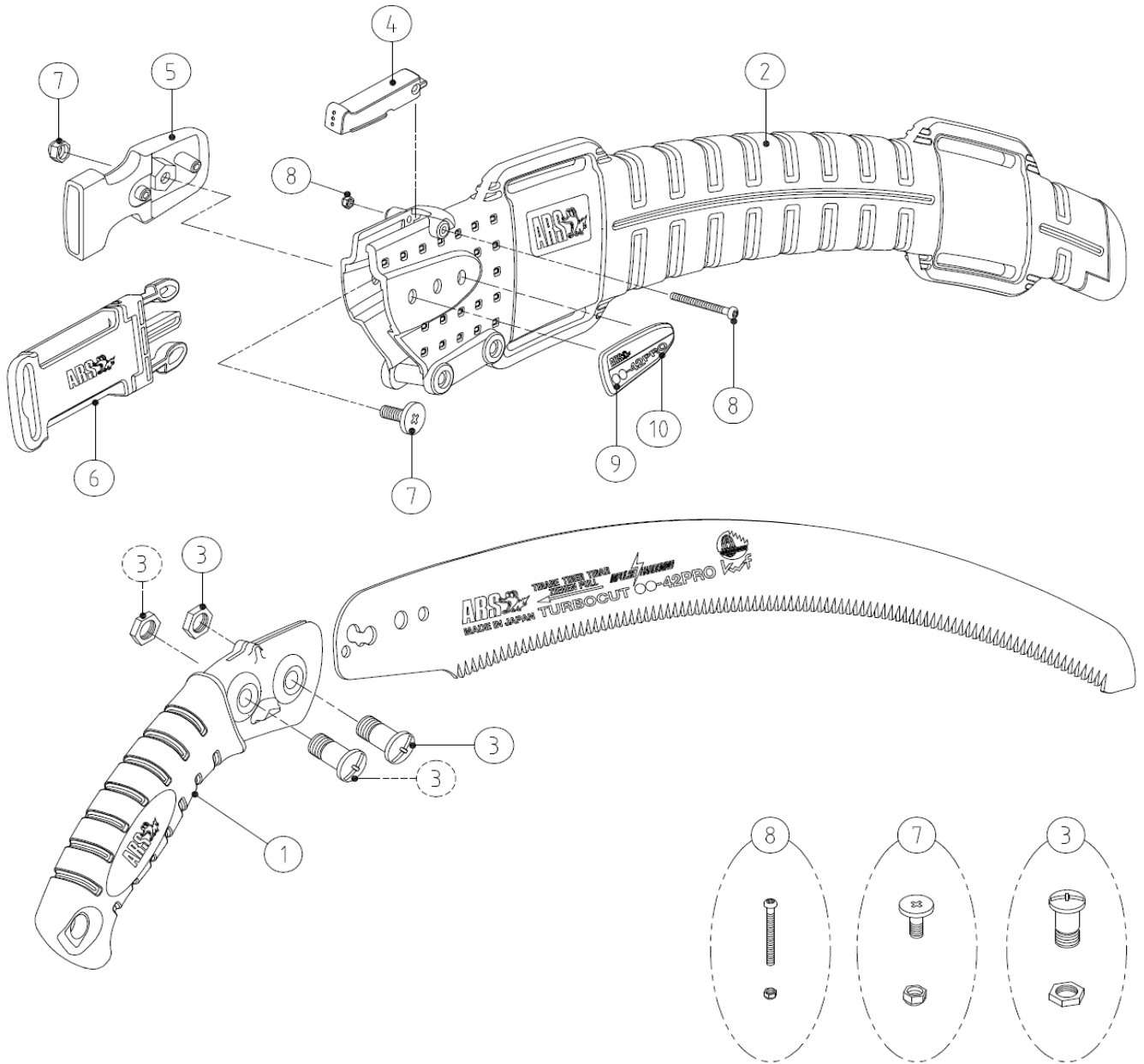


CT-42PRO / UV-42PRO



| PARTS NO. | SPECIFICATION | PARTS NO. | SPECIFICATION |
|-----------|---|-----------|---------------|
| ① | SP-427 GRIP FOR CT/UV-37PRO/42PRO | | |
| ② | SP-428 SHEATH FOR CT/UV-37PRO/42PRO (W/O STOPPER, NAME PLATE OR BELT CLIP) | | |
| ③ | SP-359 BOLT & NUT FOR CAM/CT/UV/CTR/ UVR-PRO SERIES (1PC EACH) | | |
| ④ | SP-372 STOPPER FOR CT/UV/CTR/UVR-32PRO/ 37PRO/42PRO | | |
| ⑤ | SP-367 BELT CLIP FOR CAM/CT/UV/CTR/ UVR-PRO SERIES | | |
| ⑥ | SP-429 BELT FOR CAM/CT/UV/CTR/UVR-PRO SERIES | | |
| ⑦ | SP-366 BOLT & NUT FOR THE BELT CLIP OF CAM/CT/UV/CTR/UVR-PRO SERIES | | |
| ⑧ | SP-373 BOLT & NUT FOR STOPPER OF CT/UV/CTR/ UVR-32PRO/-EXP/37PRO/42PRO | | |
| ⑨ | SP-443 NAME PLATE FOR CT-42PRO | | |
| ⑩ | SP-444 NAME PLATE FOR UV-42PRO | | |